



## **Rabbit anti Neuropilin-1 (Paired T916) Polyclonal Antibody**

**Alternative Name(s):** Neuropilin-1; transmembrane receptor; VEGF165R; NRP1; CD304

### **Order Information**

- **Description:** Neuropilin-1 (Paired T916)
- **Catalogue:** 620-340
- **Lot:** See label
- **Size:** 100ug/200ul
- **Host:** Rabbit
- **Clone:** nan
- **Application:** IHC(P), WB
- **Reactivity:** Hu, Bv

### **ANTIGEN PREPARATION**

A synthetic peptide surrounding the epitope –LNTQS- without phosphorylation site at Thr916. This sequence is identical among human and bovine.

### **BACKGROUND**

The neuropilin-1 (Nrp1) is a multifunctional protein, identified principally as a receptor for the class 3 semaphorins and members of the vascular endothelial growth factor (VEGF) family, but it is capable of other interactions. It is a marker of regulatory T cells (Tr), which often carry Nrp1 and latency-associated peptide (LAP)-TGF-beta1 (the latent form). Nrp1 is reported to be expressed in breast cancer cells. The ischemia can increase neuropilin 1 protein expression in experimental rat brain as well. The phosphorylation of Nrp1 is essential for the Nrp1 activation.

### **PURIFICATION**

The Rabbit IgG is purified by Epitope Affinity Purification

### **FORMULATION**

This affinity purified antibody is supplied in sterile Phosphatebuffered saline (pH7.2) containing antibody stabilizer

### **SPECIFICITY**

This antibody recognizes ~130 kDa of human Neuropilin1 protein without phosphorylation site of Thr 916. It does not cross react to phospho Neuropilin 1. The other species are not tested.

### **STORAGE**

The antibodies are stable for 24 months from date of receipt when stored at –20oC to –70oC. The antibodies can be stored at 2oC-8oC for three month without detectable loss of activity. Avoid repeated freezing-thawing cycles.

### **APPLICATIONS/SUGGESTED WORKING DILUTIONS\***

- Western Blot: 0.1-1 µg/ml
- ELISA: 0.01-0.1 µg/ml
- Immunoprecipitation: 2-5 µg/ml
- IHC: 2-10 µg/ml
- Flow cytometry: Not tested
- Molecular Weight: 140.0
- Positive Control: Kidney Tissue
- Cellular Location: Cell Membrane

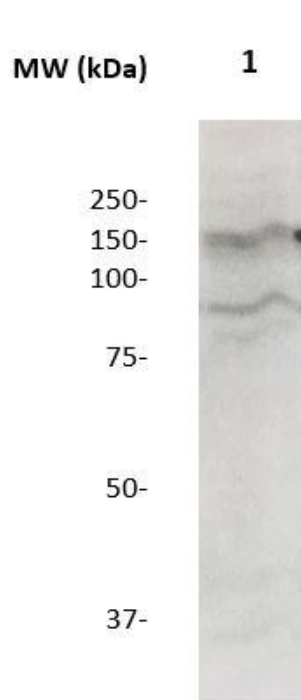
\*Optimal dilutions should be determined by researchers for the specific applications.

### **FOR RESEARCH USE ONLY.**

AbboMax, Inc 2528 Qume Drive, Suite 8, San Jose, California 95131, USA  
1 408-573-1898 (Tel). 1 408-573-1858 (Fax). [www.abbomax.com](http://www.abbomax.com) [info@abbomax.com](mailto:info@abbomax.com)



## DATA ATTACHMENTS



Western Blot: The whole cell lysate from U118MG immunoblotted by Rabbit anti-Neuropilin1 (Paired T916) (Cat#620-340) at 1:1000. An immunoreactive band at ~130kDa was observed.

## REFERENCES

### FOR RESEARCH USE ONLY.

AbboMax, Inc 2528 Qume Drive, Suite 8, San Jose, California 95131, USA  
1 408-573-1898 (Tel). 1 408-573-1858 (Fax). [www.abbomax.com](http://www.abbomax.com) [info@abbomax.com](mailto:info@abbomax.com)